



Synaptotagmin XI Polyclonal Antibody

Catalog No	YP-Ab-00744
Isotype	IgG
Reactivity	Human;Mouse;Rat
Applications	WB;ELISA
Gene Name	SYT11
Protein Name	Synaptotagmin-11
Immunogen	The antiserum was produced against synthesized peptide derived from human SYT11. AA range:181-230
Specificity	Synaptotagmin XI Polyclonal Antibody detects endogenous levels of Synaptotagmin XI protein.
Formulation	Liquid in PBS containing 50% glycerol, 0.5% BSA and 0.02% sodium azide.
Source	Polyclonal, Rabbit,IgG
Purification	The antibody was affinity-purified from rabbit antiserum by affinity-chromatography using epitope-specific immunogen.
Dilution	Western Blot: 1/500 - 1/2000. ELISA: 1/10000. Not yet tested in other applications.
Concentration	1 mg/ml
Purity	≥90%
Storage Stability	-20°C/1 year
Synonyms	SYT11; KIAA0080; Synaptotagmin-11; Synaptotagmin XI; SytXI
Observed Band	48kD
Cell Pathway	Cytoplasmic vesicle membrane ; Single-pass membrane protein . Perikaryon . Golgi apparatus, trans-Golgi network membrane ; Single-pass membrane protein . Recycling endosome membrane ; Single-pass membrane protein . Lysosome membrane ; Single-pass membrane protein . Cytoplasmic vesicle, phagosome . Cell projection, axon . Cell projection, dendrite . Cell junction, synapse, postsynaptic density . Recycling endosome membrane ; Single-pass membrane protein . Cytoplasmic vesicle, clathrin-coated vesicle membrane ; Single-pass membrane protein . Perikaryon . Localized in vesicles that travels in axonal and dendritic shafts in both anterograde and retrograde directions. In macrophages and microglia, recruited in phagosomes at early stages of phagocytosis (By similarity). Found in the core of the
Tissue Specificity	Amygdala,Bone marrow,Brain,Lymph,
Function	cofactor: Binds 3 calcium ions per subunit. The ions are bound to the C2 domains. function: May be involved in Ca(2+)-dependent exocytosis of secretory vesicles through Ca(2+) and phospholipid binding to the C2 domain or may serve as Ca(2+) sensors in the process of vesicular trafficking and exocytosis. PTM: Ubiquitinated and targeted to the proteasome complex for



degradation.,similarity:Belongs to the synaptotagmin family.,similarity:Contains 2 C2 domains.,subcellular location:In substantia nigra, observed in neuronal cell bodies and neurites. Found in the core of the Lewy bodies in the brain of sporadic Parkinson disease patients.,subunit:Homodimer. Can also form heterodimers (By similarity). Interacts with PARK2.,

Background

synaptotagmin 11(SYT11) Homo sapiens This gene is a member of the synaptotagmin gene family and encodes a protein similar to other family members that are known calcium sensors and mediate calcium-dependent regulation of membrane trafficking in synaptic transmission. The encoded protein is also a substrate for ubiquitin-E3-ligase parkin. The gene has previously been referred to as synaptotagmin XII but has been renamed synaptotagmin XI to be consistent with mouse and rat official nomenclature. [provided by RefSeq, Apr 2010],

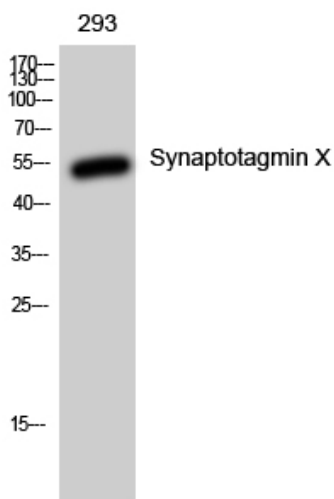
matters needing attention

Avoid repeated freezing and thawing!

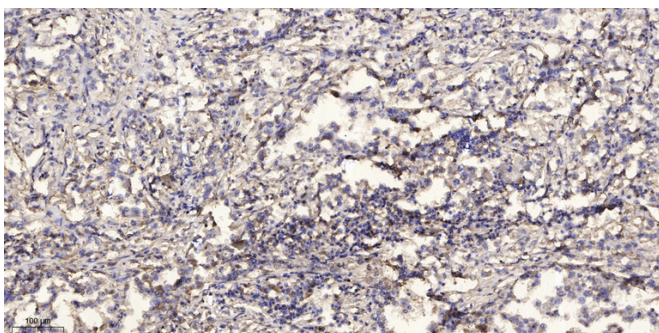
Usage suggestions

This product can be used in immunological reaction related experiments. For more information, please consult technical personnel.

Products Images



Western Blot analysis of various cells using Synaptotagmin XI Polyclonal Antibody



Western blot analysis of SYT11 Antibody. The lane on the right is blocked with the SYT11 peptide.